

2022 ALP Attendee Safety Information for Tempe Mission Palms

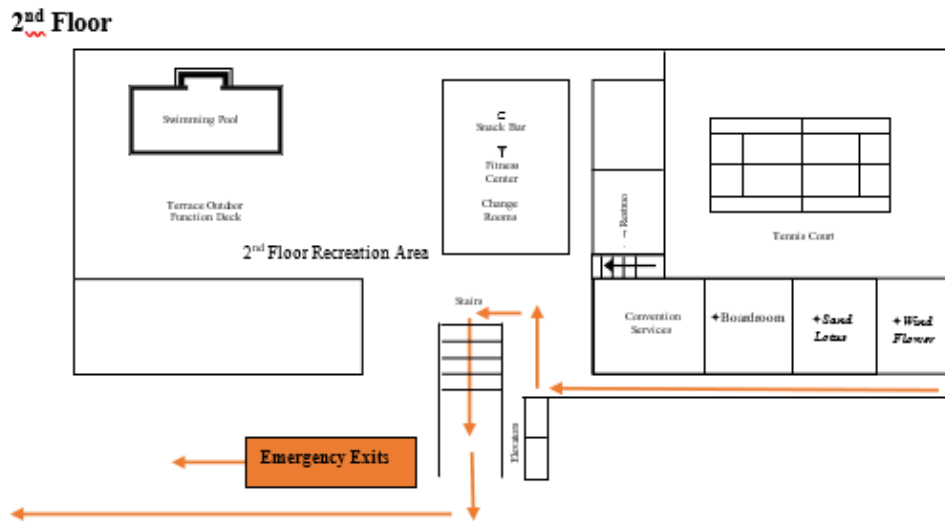
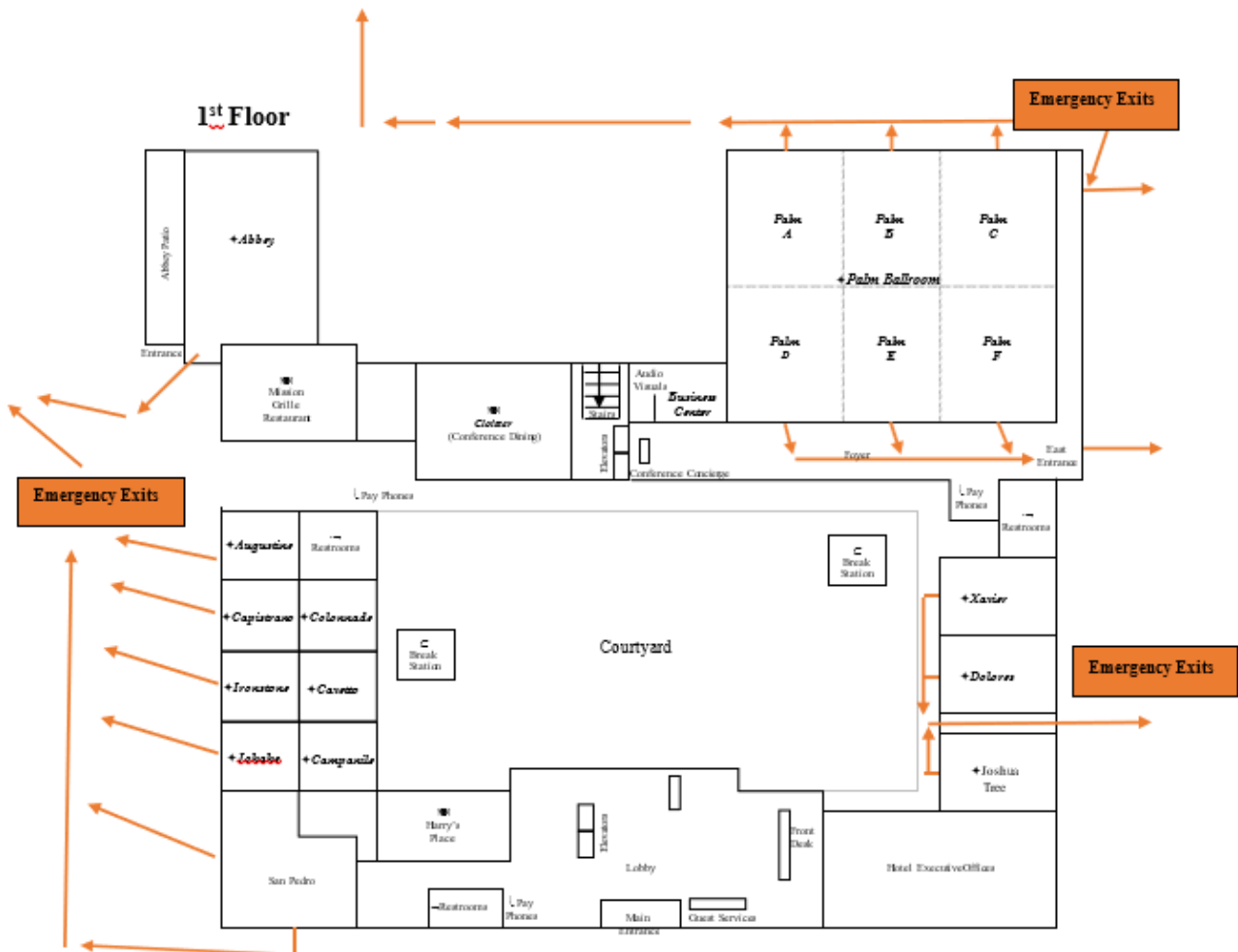
Although we hope that this information will not be needed, please familiarize yourself with the location of emergency exits and evacuation routes for the hotel. In most instances, hotel or CUPA-HR staff will provide instructions if an emergency evacuation is required. Should neither be available, exit the facility as quickly and safely as possible. The following diagrams highlight exits and assembly areas.

Assembly Areas

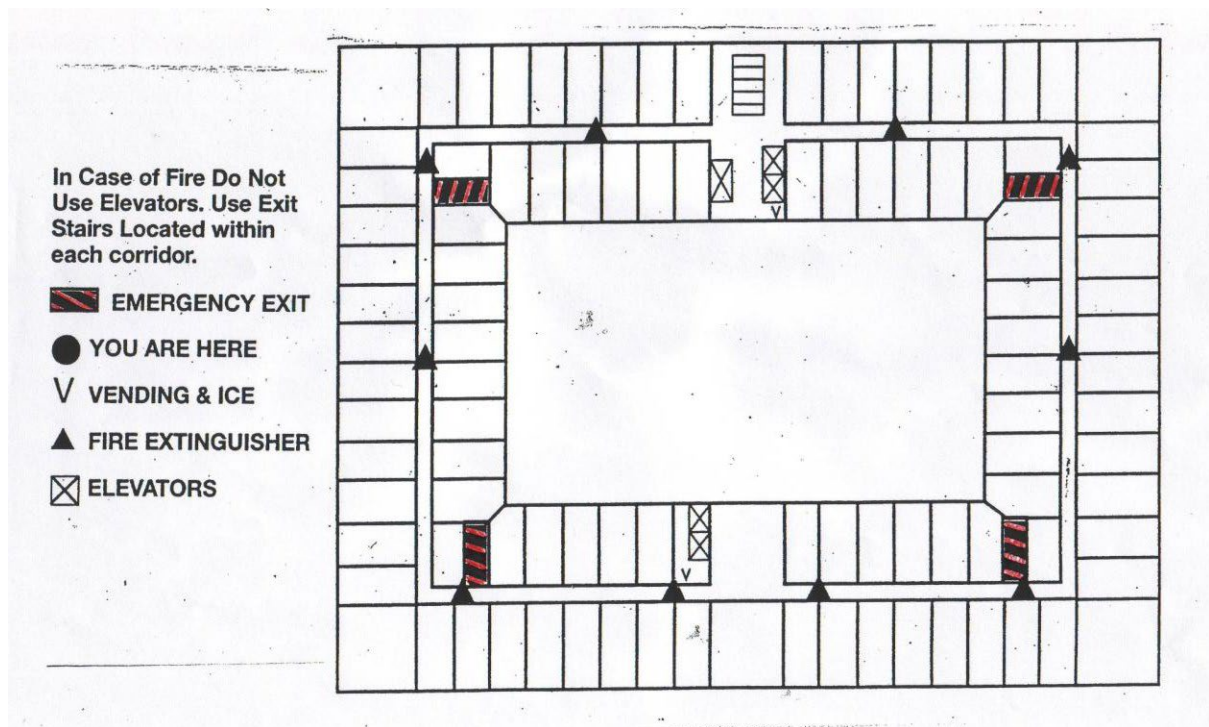
The Northeast Guest/Staff Assembly Area is the closest to the exit from the Palm Ballroom.



Hotel Meeting Space — Evacuation Routes



Guest Rooms — Emergency Stairwell Locations (All Floors)



Active Shooter Procedures

- **Quickly determine the most reasonable way to protect your own life.** If possible, evacuate the premises and help others if able. Once out, call 911 and prevent others from entering.
- **If you cannot exit, hide where the shooter is less likely to find you.** A space with a lockable door is best. Silence you cell phone or any device that makes a noise and remain quiet. Try to hide behind large items like a desk or cabinet.
- **Only if your life is in immediate danger, attempt to disrupt and/or incapacitate the shooter** by acting aggressively against them, throwing objects or improvising weapons, yelling and committing to your actions.
- **When law enforcement personnel arrive:** Remain calm, listen for their instructions, raise hands and keep them visible at all times, do not hold objects in your hands, only offer information regarding quantity of shooters, weapons used, physical description and location of injured people. Note: officers will not respond to injuries, those will be addressed by the rescue team.

CUPA-HR staff members will secure a count of both attendees and staff as soon as feasibly possible.