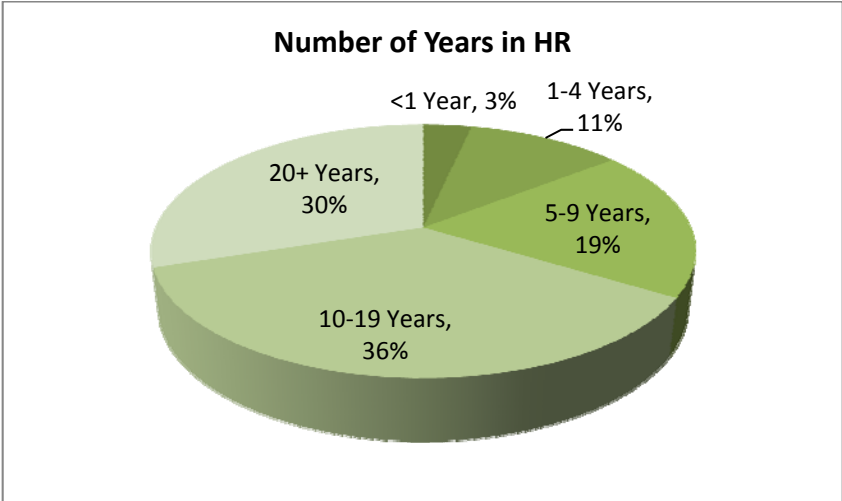
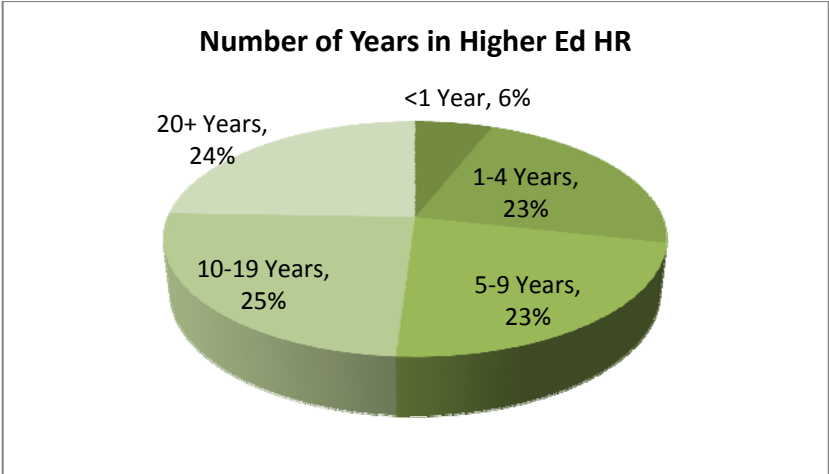


CUPA-HR Region Conference Attendee Demographics

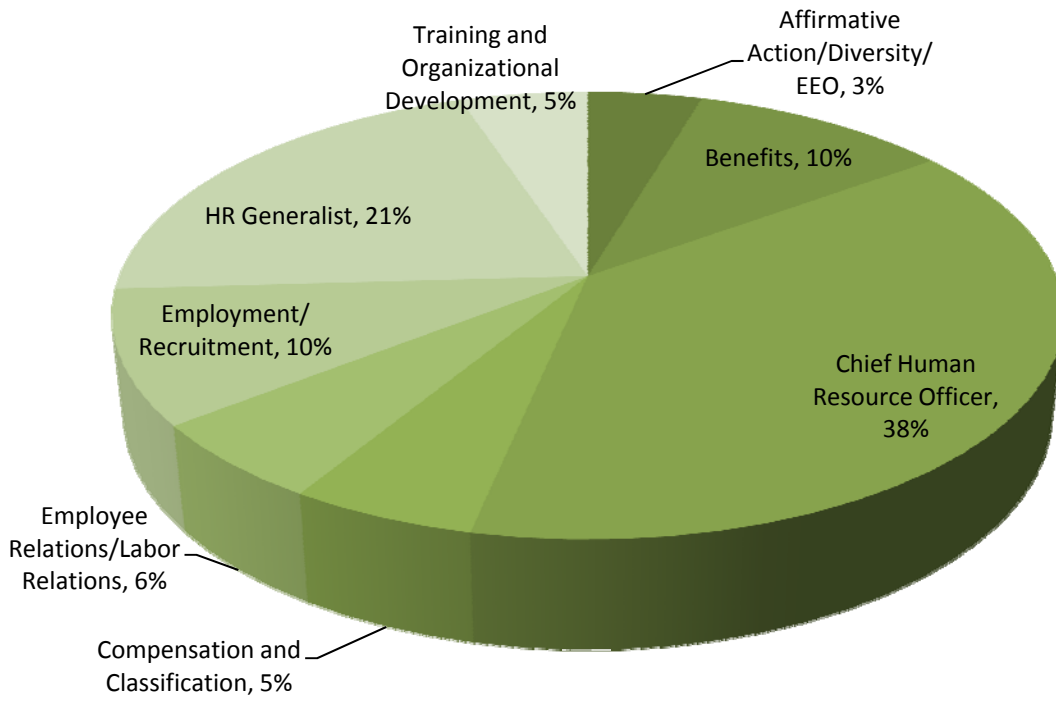
Midwest Region 2010 and 2011 Attendee Demographics

Avg Number of Attendees: 152

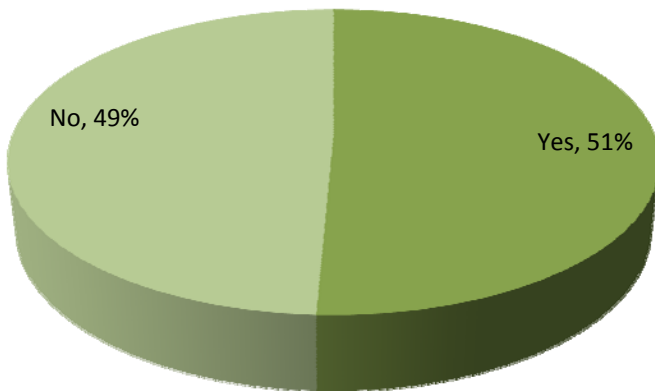
79% of the Midwest Region attendees either influence or make the final decision on purchasing HR products/services.



Primary Area of Focus



First-Time Attendee?



CUPA-HR Midwest Region Conference - Attendees 2010 and 2011

Title	Institution Name	Institution City	State
Assistant to the President/Director of Office Services	Alexandria Technical College	Alexandria	MN
Human Resources Assistant	Anoka Technical College	Anoka	MN
Associate Vice Chancellor for Administration	Arkansas State University	State University	AR
Assistant Director of HR	Baker College of Flint	Flint	MI
Vice President for Human Resources	Baker College of Flint	Flint	MI
Assistant Director of HR	Baker College System	Flint	MI
Vice President for Human Resources	Baker College System	Flint	MI
Human Resources Program Coordinator	Ball State University	Muncie	IN
Compensation & Human Resources Specialist	Ball State University	Muncie	IN
Director Human Resources	Baptist Bible College	Springfield	MO
Chief Human Resources Officer	Bellarmino University	Louisville	KY
Director of Human Resources	Black Hills State University	Spearfish	SD
Director of Human Resources	Black Hills State University	Spearfish	SD
Business Analyst	Bowling Green State University	Bowling Green	OH
Business Analyst	Bowling Green State University	Bowling Green	OH
Classification and Compensation Analyst	Bowling Green State University	Bowling	OH
Employee Rel Spec	Bowling Green State University	Bowling Green	OH
Training and Documentation Specialist	Bowling Green State University	Bowling Green	OH
Human Resources Director	Capital University	Columbus	OH
Assistant Director, Human Resources	Capital University	Columbus	OH
Director of Human Resources	Capital University	Columbus	OH
Human Resources Manager	Carnegie Mellon University	Pittsburgh	PA
Director of Organizational Development and Learning	Case Western Reserve University	Cleveland	OH
Director of Human Resources	Central College	Pella	IA
Staffing/Recruiting Coordinator	Central College	Pella	IA
Director of Human Resources	Central College	Pella	IA
Director of Human Resources	Central Lakes College	Brainerd	MN
Assistant Professor	Central Michigan University	Mount Pleasant	MI
Chair/Management	Central Michigan University	Mount Pleasant	MI
Administrative Assistant	Clarke College	Dubuque	IA
Director of Human Resources	Clarke College	Dubuque	IA
Payroll & Benefits Manager	Clarke College	Dubuque	IA
Director	Colonial Academic Alliance	Fairfax	VA
Director of Human Resources	Cornerstone University	Grand Rapids	MI
Chapter Coordinator	CUPA-HR	Knoxville	TN
Honorary Life Member	CUPA-HR	Boulder	CO
Manager of Conferences and Meetings	CUPA-HR	Knoxville	TN
Office Manager	CUPA-HR	Knoxville	TN
President and Chief Executive Officer	CUPA-HR	Knoxville	TN
Government Relations Manager	CUPA-HR	Falls Church	VA
Manager of Conferences and Meetings	CUPA-HR	Knoxville	TN
Manager of Member Service and Chapter Relations	CUPA-HR	Knoxville	TN
Member Service Specialist	CUPA-HR	Knoxville	TN
President and Chief Executive Officer	CUPA-HR	Knoxville	TN
Director of Human Resources	Dakota Wesleyan University	Mitchell	SD

Manager of Recruitment & Employment	Delta College	University Center	MI
Director of Human Resources	Des Moines University-Osteopathic Medical Center	Des Moines	IA
Human Resources Administrator	Des Moines University-Osteopathic Medical Center	Des Moines	IA
Assistant Director, Benefits	Drake University	Des Moines	IA
Assistant Director, HR	Drake University	Des Moines	IA
Associate Director, Human Resources	Drake University	Des Moines	IA
Associate Director, Human Resources	Drake University	Des Moines	IA
Benefits Manager	Drury University	Springfield	MO
Employment Specialist	Drury University	Springfield	MO
Human Resources Assistant	Drury University	Springfield	MO
Chief Human Resources Officer	Eastern Michigan University	Ypsilanti	MI
Director Employee Relations	Eastern Michigan University	Ypsilanti	MI
HR/OD Consultant	Eastern Michigan University	Ypsilanti	MI
Chief Human Resources Officer	Eastern Michigan University	Ypsilanti	MI
Director of Diversity/Affirmative Action	Eastern Michigan University	Ypsilanti	MI
Director Training & OD	Eastern Michigan University	Ypsilanti	MI
Human Resources Secretary	Edison State Community College	Piqua	OH
Director Human Resources	Ferris State University	Big Rapids	MI
Associate Vice President, Human Resources	Ferris State University	Big Rapids	MI
Director Human Resources	Ferris State University	Big Rapids	MI
Manager of Employee Resources	Franklin College of Indiana	Franklin	IN
Associate Vice President for Human Resources and Diversity	Governors State University	University Park	IL
Human Resource Associate	Governors State University	University Park	IL
Director of Human Resources	Grace College and Seminary	Winona Lake	IN
Human Resource Generalist	Grace College and Seminary	Winona Lake	IN
Director, Human Resources	Grinnell College	Grinnell	IA
Director of Human Resources	Gustavus Adolphus College	Saint Peter	MN
Director of Human Resources	Hanover College	Hanover	IN
Admin Asst the VP for Business Affairs & Insurance Benefits Coordinator	Hastings College	Hastings	NE
Vice President for Business Affairs	Hastings College	Hastings	NE
Director, Human Resources	Heartland Community College	Normal	IL
Secretary, Human Resources	Highland Community College	Freeport	IL
Assistant Director of Human Resources	Hocking Technical College	Nelsonville	OH
Director of Human Resources	Hocking Technical College	Nelsonville	OH
Coordinator for Employee Benefits	Illinois College	Jacksonville	IL
Director of Human Resources	Illinois College	Jacksonville	IL
Sr. Compensation & Benefits Consultant	Illinois Institute of Technology	Chicago	IL
Director of Human Resources	Illinois Valley Community College	Oglesby	IL
HR Specialist	Illinois Valley Community College	Oglesby	IL
Associate Director for Finance & Administration	Indiana University - Purdue University Indianapolis	Indianapolis	IN
Associate Vice Chancellor for Facilities	Indiana University - Purdue University Indianapolis	Indianapolis	IN
Associate Director, Affirmative Action	Indiana University at Bloomington	Bloomington	IN
Director, Human Resources, Adjunct Facility Instructor	Indiana University at Bloomington	Bloomington	IN

Equal Employment Opportunity Specialist	Indiana University At Bloomington	Bloomington	IN
University Director Retirement Program and Worker's Comp Services	Indiana University at Bloomington	Bloomington	IN
Director of Human Resources	Indiana University East	Richmond	IN
Director of Human Resources	Indiana University Kokomo	Kokomo	IN
Director Human Resources	Indiana University South Bend	South Bend	IN
Affirmative Action	Indiana University-Purdue University Indianapolis	Indianapolis	IN
Chancellor	Indiana University-Purdue University Indianapolis	Indianapolis	IN
Human Resources & Staff Development Manager	Indiana University-Purdue University Indianapolis	Indianapolis	IN
IU School of Liberal Arts	Indiana University-Purdue University Indianapolis	Indianapolis	IN
Manager, Training and Organization Development	Indiana University-Purdue University Indianapolis	Indianapolis	IN
Sr. Consultant, Training & Organization Development	Indiana University-Purdue University Indianapolis	Indianapolis	IN
Associate Vice President	Iowa State University	Ames	IA
Assistant Director HR/Benefit Coordinator	Ivy Tech Community College of Indiana-Central Office	Indianapolis	IN
Director of Human Resources	Ivy Tech Community College of Indiana-Central Office	Indianapolis	IN
Executive Director of Employee Benefits	Ivy Tech Community College of Indiana-Central Office	Indianapolis	IN
Executive Director of Human Resources	Ivy Tech Community College of Indiana-Central Office	Indianapolis	IN
Vice President for Administration	Ivy Tech Community College of Indiana-Central Office	Indianapolis	IN
Assistant Director HR	Ivy Tech Community College of Indiana-Lafayette	Lafayette	IN
Assistant Director of HR	Ivy Tech Community College of Indiana-Lafayette	Lafayette	IN
Executive Director of Human Resources	Ivy Tech Community College of Indiana-Lafayette	Lafayette	IN
Computer Information Specialist	Kansas State University	Manhattan	KS
Director of Human Resources	Lake Land College	Mattoon	IL
Director of Human Resources	Lake Superior College	Duluth	MN
Associate Vice Chancellor	Louisiana State University and Agricultural and Mechanical College	Baton Rouge	LA
Coordinator of University Auxiliary Services	Louisiana State University and Agricultural and Mechanical College	Baton Rouge	LA
Director, Human Resources	Luther College	Decorah	IA
Director of Employment Services (HR)	Macalester College	Saint Paul	MN
Director of Employment Services (HR)	Macalester College	Saint Paul	MN
HR Director	Marion Technical College	Marion	OH
Director, Human Resources	Maryville University of Saint Louis	Saint Louis	MO
Director of Human Resources	McNally Smith College of Music	Saint Paul	MN
Organizational Development Director	Medical College of Wisconsin	Milwaukee	WI
Human Resources Director	Methodist College of Nursing	Peoria	IL
Associate Vice President of Human Resources	Metropolitan Community College	Omaha	NE

Chief Human Resources Officer	Metropolitan State University	Saint Paul	MN
Associate Director of HR Business Operations	Michigan Technological University	Houghton	MI
Sr. Vice President for Business Affairs	Midlands Technical College	West Columbia	SC
Asst. Director, Human Resources	Minneapolis College of Art Design	Minneapolis	MN
Vice President Administration	Minneapolis College of Art Design	Minneapolis	MN
Personnel Director - Data Integrity	Minnesota State Colleges & Universities System Office	St. Paul	MN
System Director for Labor Relations-Stat	Minnesota State Colleges & Universities System Office	St Paul	MN
System Director of Personnel	Minnesota State Colleges & Universities System Office	St. Paul	MN
System Director, Personnel	Minnesota State Colleges & Universities System Office	St. Paul	MN
HR Consultant	Minnesota State Colleges and Universities System Office	Saint Paul	MN
Labor Relations Representative	Minnesota State Colleges and Universities System Office	Saint Paul	MN
System Director of Personnel	Minnesota State Colleges and Universities System Office	St. Paul	MN
Personnel Officer Senior	Minnesota State University Moorhead	Moorhead	MN
Director of Human Resources	Moberly Area Community College	Moberly	MO
Director Labor Relations & Personnel	Montana University System Office	Helena	MT
Director of Human Resources	Mount Vernon Nazarene University	Mt Vernon	OH
Director of Human Resources	Mount Vernon Nazarene University	Mt Vernon	OH
Senior Administrative Assistant	Newman University	Wichita	KS
Human Resources Director	North Dakota State College of Science	Wahpeton	ND
Human Resources Director	North Dakota State College of Science	Wahpeton	ND
Vice President, Human Resources	Northeast Wisconsin Technical College	Green Bay	WI
Director of Human Resources/EO Officer	Northern Michigan University	Marquette	MI
Human Resources Specialist	Northwest Missouri State University	Maryville	MO
Vice President of Human Resources and Organizational Effectiveness	Northwest Missouri State University	Maryville	MO
Director of Human Resources	Northwestern College	Orange City	IA
Director Human Resources	Northwestern Health Sciences University	Bloomington	MN
Sr. HR Generalist	Northwestern Health Sciences University	Bloomington	MN
Associate Vice President Human Resources	Northwestern University	Evanston	IL
Benefits Manager - Health & Welfare Plans	Northwestern University	Evanston	IL
HRIS Sr Business Analyst	Northwestern University	Evanston	IL
HRIS Sr Business Analyst	Northwestern University	Evanston	IL
Manager Faculty Records & Business Operations	Northwestern University	Evanston	IL
Assistant Vice President, Academic HR	Oakland University	Rochester	MI
Director, Human Resources	Oakton Community College	Des Plaines	IL
Assistant To the AVP for HR	Oakton Community College	Des Plaines	IL
Assistant Dean for Administration	Ohio Northern University	Ada	OH
Director, Com-Human Resources & Admin. Services	Ohio University	Athens	OH
Director, Employment & Recruitment	Ohio University	Athens	OH
HR Records Specialist	Ohio University	Athens	OH
Benefits Manager	Parkland College	Champaign	IL
Employee Relations Manager	Parkland College	Champaign	IL

HR Specialist	Purdue University Main Campus	West Lafayette	IN
Director of Employment	Roosevelt University	Chicago	IL
Project Manager	Roosevelt University	Chicago	IL
Vice President of Human Resources	Roosevelt University	Chicago	IL
Assistant Vice President, Human Resources	Roosevelt University	Chicago	IL
HRIS Specialist	Roosevelt University	Chicago	IL
Vice President of Human Resources	Roosevelt University	Chicago	IL
Assistant Director of Human Resources	Rose-Hulman Institute of Technology	Terre Haute	IN
Benefits Coordinator	Rose-Hulman Institute of Technology	Terre Haute	IN
Human Resources Assistant	Rose-Hulman Institute of Technology	Terre Haute	IN
Systems Analyst	Rose-Hulman Institute of Technology	Terre Haute	IN
Director of Human Resources	Rosemont College	Rosemont	PA
Assistant Director of Human Resources	Saint Catherine University	St. Paul	MN
Personnel Officer, Sr. Supervisor	Saint Cloud State University	St. Cloud	MN
Director Human Resources	Saint John's University/College of Saint Benedict	Collegeville	MN
Human Resources Coordinator	Saint John's University/College of Saint Benedict	Collegeville	MN
Director Human Resources	Saint John's University/College of Saint Benedict	Collegeville	MN
Associate Director of Human Resources	Saint Olaf College	Northfield	MN
Benefits Specialist	Saint Olaf College	Northfield	MN
Director of Human Resources	Saint Olaf College	Northfield	MN
Benefits Specialist	Saint Olaf College	Northfield	MN
Assistant Director	Shawnee State University	Portsmouth	OH
Associate Director, Human Resources	Shawnee State University	Portsmouth	OH
Director, Human Resources	Shawnee State University	Portsmouth	OH
Director of Human Resources	Silver Lake College	Manitowoc	WI
Director of Human Resources	Silver Lake College	Manitowoc	WI
Human Resources Director	South Central College	North Mankato	MN
Director of Human Resources	South Dakota Board of Regents	Pierre	SD
Assistant Director, Human Resources	South Dakota School of Mines and Technology	Rapid City	SD
Associate Director, Human Resources	South Dakota School of Mines and Technology	Rapid City	SD
Human Resources Specialist	Southeast Technical Institute	Sioux Falls	SD
Administrative Assistant/Training Specialist	Southwestern Illinois College	Belleville	IL
Assistant Director To Human Resources/Benefits Specialist	Southwestern Illinois College	Belleville	IL
Director of Human Resources	Southwestern Michigan College	Dowagiac	MI
Executive Director	Texas Southern University	Houston	TX
Associate Director of Human Resources	The College of Saint Scholastica	Duluth	MN
Vice President of Human Resources	The College of Saint Scholastica	Duluth	MN
Associate Vice President for Human Resources	The College of Wooster	Wooster	OH
Assistant Vice President, Administration and Support Services	The Ohio State University	Columbus	OH
Project Manager	The Ohio State University Main Campus	Columbus	OH
Director of Administration	The Principia	Elsah	IL
Human Resources Coordinator	The Principia	Elsah	IL
Associate Vice President Human Resources & Labor Relations	The University of Akron, Main Campus	Akron	OH
Director, Employee Relations	The University of Akron, Main Campus	Akron	OH

Director, Employment & EEO/AA	The University of Akron, Main Campus	Akron	OH
Recruitment Advisor	The University of Arizona	Tucson	AZ
Vice President for Human Resources	The University of Arizona	Tucson	AZ
Dean of Students	Tiffin University	Tiffin	OH
Director, Compensation	University of Illinois At Chicago	Chicago	IL
Executive Director and Associate Vice President of Human Resources	University of Illinois At Chicago	Champaign	IL
Acting Director Human Resources	University of Illinois at Springfield	Springfield	IL
Human Resource Assistant Manager	University of Illinois at Springfield	Springfield	IL
Human Resource Representative	University of Illinois at Springfield	Springfield	IL
Director, Benefits Plan Administration & Compliance	University of Illinois at Urbana-Champaign	Champaign	IL
Associate Director for Human Resources	University of Illinois at Urbana-Champaign	Champaign	IL
Associate Director, Academic HR	University of Illinois at Urbana-Champaign	Champaign	IL
Associate Director, Academic Human Resources	University of Illinois at Urbana-Champaign	Champaign	IL
Associate Provost for Human Resources	University of Illinois at Urbana-Champaign	Champaign	IL
Deputy Director	University of Illinois at Urbana-Champaign	Champaign	IL
Deputy Director of Employment Services	University of Illinois at Urbana-Champaign	Champaign	IL
Director Academic Human Resources	University of Illinois at Urbana-Champaign	Champaign	IL
Director, Equal Opportunity & Human Resources	University of Illinois at Urbana-Champaign	Champaign	IL
Director, Organizational Effectiveness	University of Illinois at Urbana-Champaign	Champaign	IL
Senior HR Coordinator	University of Illinois at Urbana-Champaign	Champaign	IL
Sr. Associate Director, Employee Relations & Human Resources	University of Illinois at Urbana-Champaign	Urbana	IL
Assistant Director, Human Resources and Financial Management	University of Illinois University Administration	Urbana	IL
Associate Director, HR Administration	University of Illinois University Administration	Champaign	IL
Senior Associate Director	University of Illinois University Administration	Urbana	IL
Administrative Assistant	University of Indianapolis	Indianapolis	IN
Benefits Manager	University of Indianapolis	Indianapolis	IN
Provost	University of Indianapolis	Indianapolis	IN
Administrative Assistant	University of Iowa	Iowa City	IA
Assistant Director, Human Resources	University of Iowa	Iowa City	IA
Director of Finance and Human Resources	University of Iowa	Iowa City	IA
Assistant Director, Human Resources	University of Iowa	Iowa City	IA
Assistant Manager, Human Resources	University of Iowa	Iowa City	IA
Assistant Manager, Human Resources	University of Iowa	Iowa City	IA
Benefits Manager	University of Iowa	Iowa City	IA
Senior Associate Director	University of Iowa	Iowa City	IA
Senior Human Resources Specialist	University of Iowa	Iowa City	IA
Lead HR Compensation Consultant	University of Michigan Health System	Ann Arbor	MI
Research Coordinator	University of Michigan-Ann Arbor	Ann Arbor	MI
Research Coordinator	University of Michigan-Ann Arbor	Ann Arbor	MI
Senior Director, HR Strategy and Planning	University of Michigan-Ann Arbor	Ann Arbor	MI
Assistant Department Director	University of Minnesota-Twin Cities	Minneapolis	MN
Associate Administrator/Operations Manager	University of Minnesota-Twin Cities	Minneapolis	MN
Associate Counselor	University of Minnesota-Twin Cities	Minneapolis	MN

Chief of Staff and Director of Human Resources	University of Minnesota-Twin Cities	Minneapolis	MN
Human Resources Specialist	University of Minnesota-Twin Cities	Minneapolis	MN
Vice President for Human Resources	University of Missouri System Administration	Columbia	MO
Associate Vice President for Total Compensation	University of Missouri System Administration	Columbia	MO
Vice President for Human Resources	University of Missouri System Administration	Columbia	MO
Senior Human Resources Facilitator	University of Nebraska - Lincoln	Lincoln	NE
Personnel Coordinator	University of Nebraska - Lincoln	Lincoln	NE
Senior Human Resources Facilitator	University of Nebraska - Lincoln	Lincoln	NE
Administrative Officer, Human Nutrition Research Center	University of North Dakota Main Campus	Grand Forks	ND
HR Specialist	University of Saint Thomas	Saint Paul	MN
AVP for Human Resources	University of Sioux Falls	Sioux Falls	SD
Vice President for Human Resources	University of Sioux Falls	Sioux Falls	SD
Vice President for Human Resources	University of Texas Health Science Center San Antonio	San Antonio	TX
Human Resources Manager	University of Wisconsin Colleges	Madison	WI
Director of Human Resources	University of Wisconsin Colleges and Extension	Madison	WI
Administrative Officer, I & MT	University of Wisconsin-Milwaukee	Milwaukee	WI
Assistant Dean	University of Wisconsin-Milwaukee	Milwaukee	WI
Director of Human Resources	University of Wisconsin-Milwaukee	Milwaukee	WI
Human Resources Specialist	University of Wisconsin-Milwaukee	Milwaukee	WI
University Benefit Specialist	University of Wisconsin-Milwaukee	Milwaukee	WI
University Benefit Specialist	University of Wisconsin-Milwaukee	Milwaukee	WI
Director of Human Resources	University of Wisconsin-Milwaukee	Beulah	MI
Program & Policy Analyst	University of Wisconsin-Milwaukee	Milwaukee	WI
Director of Human Resources (Interim)	University of Wisconsin-Oshkosh	Oshkosh	WI
Director of Human Resources (Interim)	University of Wisconsin-Oshkosh	Oshkosh	WI
Human Resources Director	University of Wisconsin-Parkside	Kenosha	WI
Director of Human Resources	University of Wisconsin-Platteville	Platteville	WI
Director of Human Resources	University of Wisconsin-River Falls	River Falls	WI
Director of Human Resources	Valley City State University	Valley City	ND
Director, Human Resources	Wartburg College	Waverly	IA
Director, Human Resources	Wartburg College	Waverly	IA
Human Resource Manager	Wayne State University	Detroit	MI
Director of Employment	West Virginia University	Morgantown	WV
Associate Director of Human Resources	Wichita State University	Wichita	KS
Director of Human Resources	Wichita State University	Wichita	KS
Director of Human Resources	Wichita State University	Wichita	KS